



Ardmore Roderick

TRANSPORTATION STATEMENT OF QUALIFICATIONS



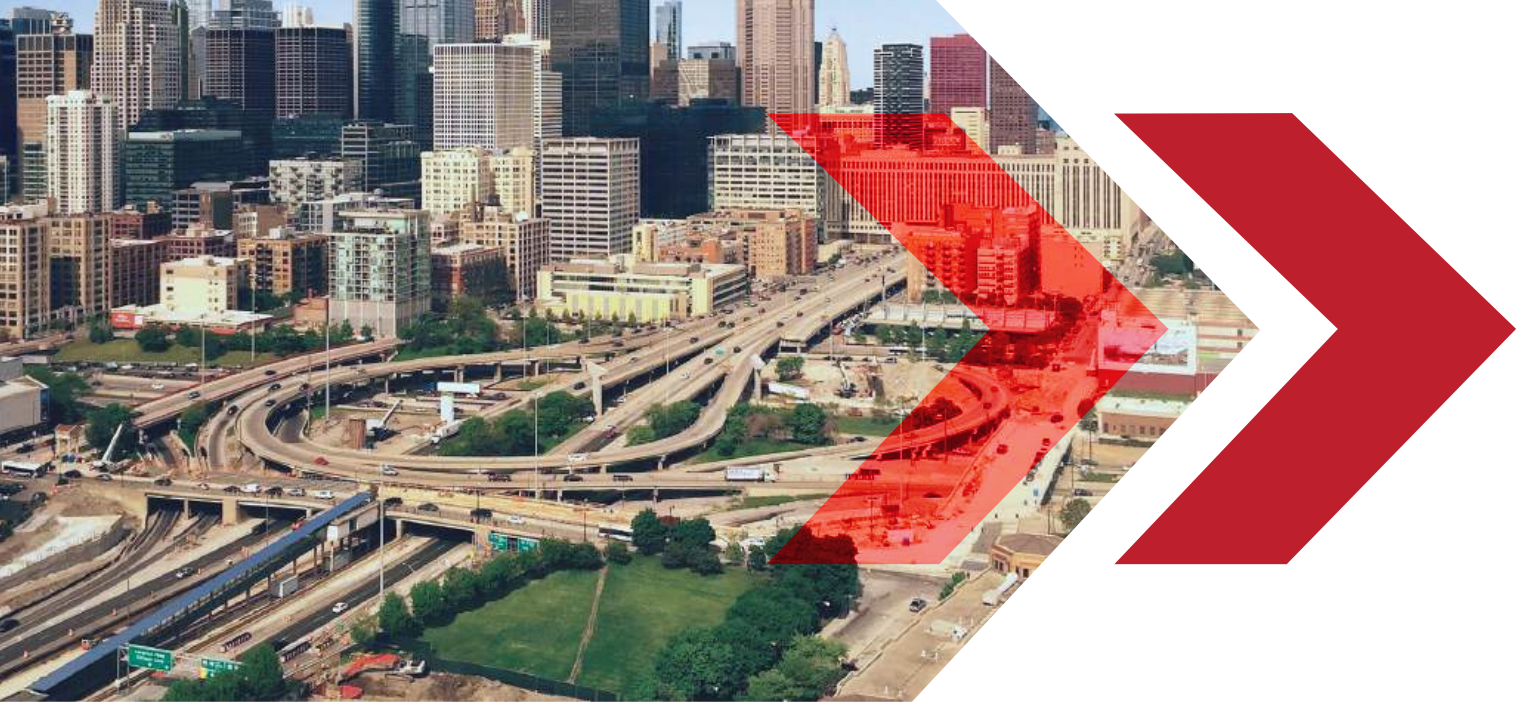
TABLE OF CONTENTS

Tab 01: About Ardmore Roderick	2
Tab 02: Transportation Leadership	3
Tab 03: Why Ardmore Roderick?	4
Tab 04: Safety Program	5
Tab 05: Transportation Services	6
Tab 06: Project Experience	7
<ul style="list-style-type: none">• CDOT Jackson Park Mobility Improvements Project• IDOT I-55 at IL 59 Interchange New Bridge Construction• Tollway Rockford Maintenance Facility Reconstruction• Sadorus Road over I-57 Bridge Replacement (Phase I/II)• IDOT I-55 (Stevenson Expressway) & Lakeshore Drive Interchange Outbound Structures• Barrington Road IL Route 62 (Algonquin Road) to Central Road Improvements• Tollway I-294 Central Tri-State St. Charles Road To North Avenue/Lake Street• CDOT Commercial Avenue Corridor Improvements	
Tab 07: Workforce Development	11
Tab 08: Community Engagement & Partnerships	12



Our mission: To advance the design and construction of critical infrastructure and the built environment to improve communities.





ABOUT ARDMORE RODERICK

Ardmore Roderick (AR) is a full-service infrastructure solutions firm providing design, construction management, and program management services to government and private transportation, utility, facility, rail, and aviation industries. We are dedicated to enhancing our client's business by providing professional services, strong leadership, hands-on involvement, and a personalized approach.

OUR MARKETS



TRANSPORTATION



AVIATION



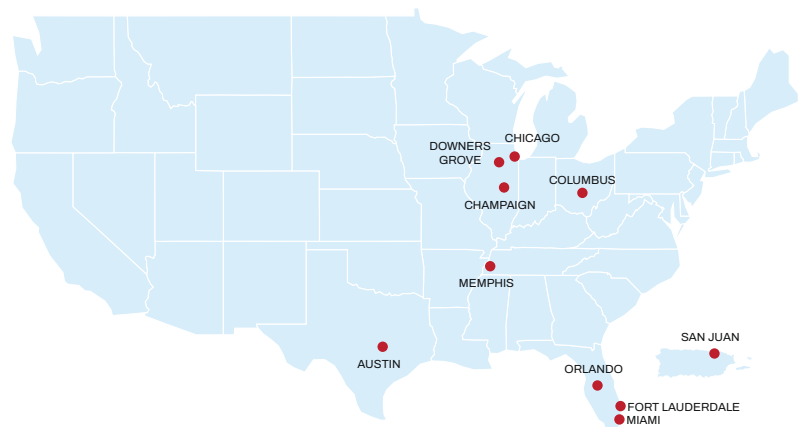
BUILDINGS & FACILITIES



ENERGY & UTILITIES



RAIL & TRANSIT



10
OFFICES

300
EMPLOYEES

65
LICENSED
PROFESSIONALS

60%
FIRM WORKFORCE
DIVERSITY





TRANSPORTATION LEADERSHIP

TAB 01

TAB 02

TAB 03

TAB 04

TAB 05

TAB 06

TAB 07

TAB 08



JEFF JACKOWSKI

Senior Vice President, Infrastructure

Jeff Jackowski is the Senior Vice President of Infrastructure at Ardmore Roderick, bringing over 30 years of expertise in the infrastructure sector, with a significant focus on rail and transit systems. His experience encompasses leadership roles across the Rail, Transportation, and Aviation groups. Jeff has successfully managed a broad portfolio of projects, including transit, railroad, tollway, and airport programs, making him a key driver of strategic development and operational excellence within the firm.



MICHAEL BURNS, PE

Associate Vice President, Construction Management

Michael Burns is a highly accomplished Civil Engineer with over 20 years of expertise in construction management and project management for roadway and bridge projects. As Associate Vice President, he has successfully led projects of various scales, including Phase III transportation projects, for clients such as Illinois Department of Transportation (IDOT), the Tollway, Chicago Department of Transportation (CDOT), Illinois State Toll Highway Authority (ISTHA), and numerous counties and municipalities. Michael's extensive experience and leadership skills ensure the successful delivery of complex infrastructure projects that meet client goals and exceed expectations.



JEFF EHRHART, PE

Director of Transportation Design

Jeff Ehrhart, has over 25 years of experience in the transportation industry. He has led projects of all sizes, encompassing Phase I Planning and Phase II Contract Documents, with clients such as Illinois Department of Transportation (IDOT), Tollway, Metra, Chicago Department of Transportation (CDOT), Chicago Transit Authority (CTA), and various counties and municipalities. Jeff oversees design, production, and strategic planning, while contributing to growth initiatives and serving on Ardmore Roderick's client perspective committee to shape the company's future.





WHY ARDMORE RODERICK? >>

AR is a trusted leader in infrastructure solutions, delivering high-impact projects nationwide. With a proven track record across a broad range of sectors, we are uniquely positioned to support large-scale programs and developments with our extensive experience and deep expertise in infrastructure systems.

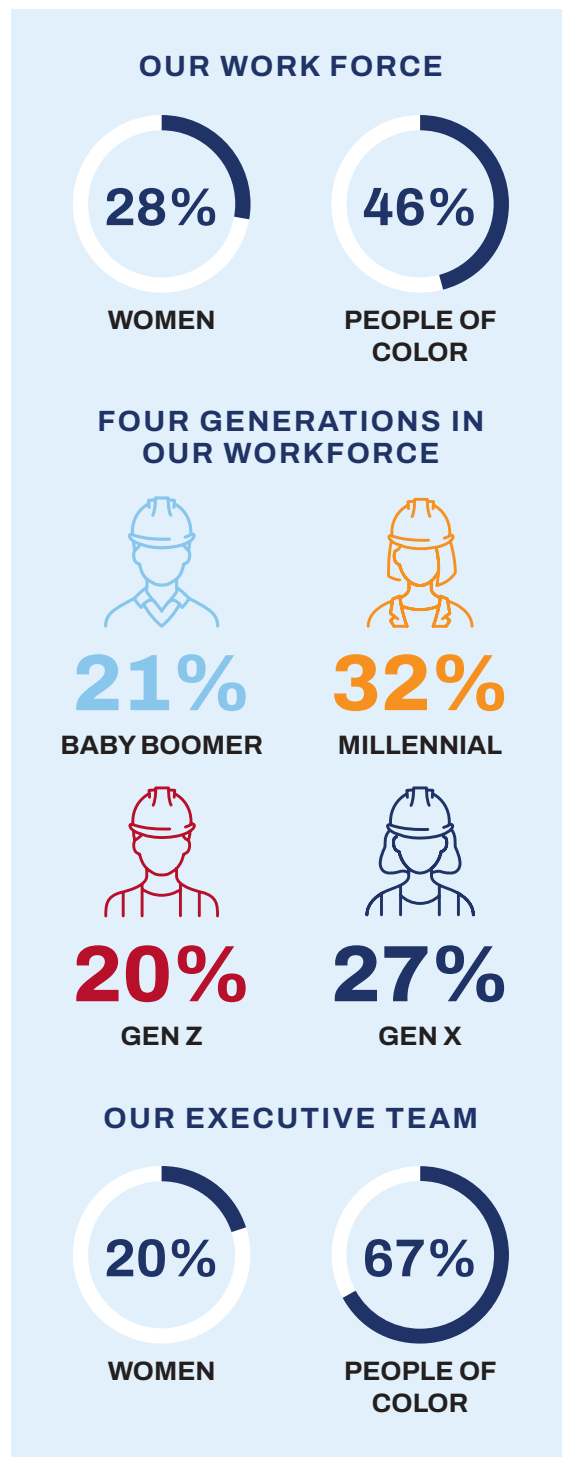
Our national reach allows us to provide services across multiple states, ensuring that our team is well-versed in navigating the complexities of local regulations, permitting processes, and stakeholder coordination in any region. We bring unrivaled insight and efficiency to every project we undertake within our core markets: aviation, buildings, energy & utilities, rail, and transportation.

Over 60% of our diverse and inclusive team come from underrepresented backgrounds, and we are committed to creating solutions that reflect the communities we serve.

At AR, we don't just deliver projects; we partner with our clients to achieve their vision, ensuring excellence at every step.

OUR CERTIFICATIONS:

- Multi-state Professional Engineering Licensure (SE, PE)
- Certified Construction Managers (CCM)
- Registered Architects (RA)
- Professional Land Surveyor and Mapper (PSM)
- Certified Survey Technicians (CST)
- OSHA 30 HR Training
- Project Management Professionals (PMP)
- Exelon Program Manager & Specialty Engineer of Choice
- LEED™ Accredited Professionals (LEED AP)
- Certified Construction Specifiers (CCS)





ARDMORE RODERICK SAFETY PROGRAM

AR upholds the highest standards of safety and reliability for its employees, clients, and the communities in which we work. As a fundamental part of our culture and operations, everyone in the firm is dedicated to putting safety first and is committed to constant growth and implementing systems for continuous improvement in safety.

OUR COMMITMENT TO SAFETY

AR understands the importance of having its employees recognize hazards and risks, maintain situational awareness, know the whys behind our safety requirements, and understand the value of safety.

- AR is committed to the health and safety of its employees and the community, as such, AR sends out weekly safety communications with relevant safety information directed to both field and office employees.
- All current employees and new hires participate in safety onboarding training and annual safety refreshers every year.
- Our ‘Near Miss, Close Call, and Good Catch’ safety program helps gather leading indicators to better identify risks before they become incidents. AR recognizes that its single most valuable asset is its workforce.
- AR tracks OSHA metrics, Preventable Motor Vehicle Accidents (PMVA), and Total Recordable Incident Rates (TRIR) to industry trends and makes programmatic improvements and tools to improve safety.
- Our managers perform quarterly safety engagements, creating opportunities for open discussions about safety and fostering an inclusive, safety-focused culture.





TRANSPORTATION >>

AR's Transportation team recognizes the critical role transportation plays in shaping vibrant communities. With a deep commitment to serving the public's best interest, we offer a comprehensive construction management program tailored to meet diverse project needs. Backed by over a decade of experience in delivering Phase I, II, and III transportation services, our team excels in managing projects of all sizes — from straightforward roadway resurfacing to complex highway reconstruction. Partner with us, and let's transform your vision into reality.

Design Services

Roadway (Resurfacing, Rehabilitation & Reconstruction)

- Feasibility Planning
- Intersection Design Studies
- Traffic Management Planning
- Geometrics
- Maintenance of Traffic/Staged Construction
- Drainage/Storm Water
- Landscaping/Erosion Control

Structural

- Bridge Design (Highway, Railroad, Pedestrian)
- Bridge Inspection & Asset Management
- Bridge Load Ratings
- Culverts & Drainage Structures
- Retaining Walls
- Earth Retention Systems
- Utility Foundations

Survey

- Topographic
- Plats & Legal
- Right of Way Analysis

Utility Design/Coordination

Permitting

Scheduling & Cost Estimating

Construction Management

- Pre-Construction Services
- Construction Administration
- Field Engineering and Inspection
- Schedule Management
- Change Order Management
- Claims Review and Recommendations
- Contract Management
- Cost Control
- Site Logistics Planning
- Project Closeout Management

IDOT Pre-Qualifications

CATEGORY	STATUS
Special Plans: Traffic Signals	✓
Special Services: Construction Inspection, Subsurface Utility Engineering, Surveying, Sanitary, Project Controls	✓
Highway: Freeways, Roads & Streets	✓
Location Design Studies: Rehabilitation, Reconstruction/ Major Rehabilitation	✓
Structures: Railroad, Highway (Advance Typical, Typical & Simple)	✓
Airports: Construction Inspection	✓
Transportation Studies: Railway Planning	✓
Special Studies: Location Drainage, Traffic Studies	✓

PROJECT HIGHLIGHTS

LOCATION:

Illinois

CLIENTS:

- City of Aurora
- City of Champaign
- City of Urbana
- Chicago Department of Transportation (CDOT)
- Chicago Skyway
- Cook County Department of Transportation & Highways (CCDOH)
- Illinois Department of Transportation (IDOT)
- Illinois State Toll Highway Authority (ISTHA)

SERVICES PROVIDED:



Construction Inspection



Utility & Permitting



Civil/Structural Engineering



Construction Management



Program Management



Highway & Drainage Design



Subsurface Utility Engineering & Survey



PROJECT EXPERIENCE

TAB 01

TAB 02

TAB 03



TAB 04

TAB 05

TAB 06

TAB 07

TAB 08

TRANSPORTATION

CDOT JACKSON PARK MOBILITY IMPROVEMENTS PROJECT

AR played a pivotal role in enhancing mobility and safety around one of Chicago’s most significant upcoming landmarks – the Obama Presidential Center. This high-profile infrastructure initiative aims to create better, safer access for pedestrians and motorists alike, ensuring a welcoming environment for visitors from across the world.

Highlights:

- AR provided Construction Engineering, Inspection, and Surveying services for this high-profile project.
- Through the strategic reconstruction of key pedestrian routes and the addition of modernized roadway features, the project enhances community connectivity and fosters smoother, safer travel.

Construction Cost: \$120 Million
Dates: 2022

IDOT I-55 AT IL 59 INTERCHANGE NEW BRIDGE CONSTRUCTION

AR was selected as the prime consultant to pave a new, two-span bridge adjacent to the existing IL 59 bridge over I-55. A diverging diamond interchange will ultimately facilitate full access to the interstate from nearby communities.

Highlights:

- AR ensured that the contractor adhered to the plans and specifications of the contract and coordinated with all local stakeholders for project status updates.
- Collaborating with an energy infrastructure company to install multiple gas lines beneath the bridge was essential to the project’s success.

Construction Cost: \$8.7 Million
Dates: 2021





TRANSPORTATION (CONT.)

TOLLWAY ROCKFORD MAINTENANCE FACILITY RECONSTRUCTION

AR was the Prime Consultant for the Illinois State Toll Highway Authority (ISTHA) Phase III Construction Management services for the reconstruction of the Rockford (M-7) maintenance site on the Jane Addams Memorial Tollway (I-90). This project is part of the 15-year, \$12 Billion capital program, Move Illinois: The Illinois Tollway Driving the Future.

The project involved construction of a 60,000 SF maintenance facility (truck parking, mechanic's bays, parts and supports services). In addition, the project required close coordination with Illinois ISTHA Maintenance to reduce the impact on operations during construction. As part of this project, AR managed the work of six subconsultants and the project was successfully completed on-time and within budget.

Construction Cost: \$25 Million
Dates: 2016 - 2018



SADORUS ROAD OVER I-57 BRIDGE REPLACEMENT (PHASE I/II)

AR served as the Prime Consultant for Phase I & II engineering services for the complete replacement of the IDOT District 5 bridge. The new structure improved safety, eliminated roadside hazards, increased vertical clearance and removed a structurally deficient bridge from the State's inventory.

Highlights:

- AR's inspection and analysis of existing structure proved original rehabilitation scope should be revised to a complete replacement.
- The existing 4-span bridge built in 1963 was replaced with a 2-span 213' long structure with metalized steel girders and integral abutments reducing future maintenance costs.

Construction Cost: \$4 Million
Dates: 2020 - 2024



TAB 01
TAB 02
TAB 03
TAB 04
TAB 05
TAB 06
TAB 07
TAB 08



PROJECT EXPERIENCE

TAB 01

TAB 02

TAB 03

TAB 04

TAB 05

TAB 06

TAB 07

TAB 08



TRANSPORTATION (CONT.)

IDOT I-55 (STEVENSON EXPRESSWAY) & LAKESHORE DRIVE INTERCHANGE OUTBOUND STRUCTURES

AR provided Phase III engineering services and program management for the reconstruction of I-55 from Lake Shore Drive to I-94.

Through this project, AR not only advances essential infrastructure but also embodies our commitment to fostering better communities through thoughtful design and execution.

Highlights:

- The team provided construction management for three new bridge structures and retaining walls, installation of curb and gutter, modifications to drainage structures, and relocation of light poles and signs.
- AR provided Green Initiatives to protect the natural habitats, Land Surveying Services, and quality assurance and quality control as-built survey checks around the area.

Construction Cost: \$77.1 Million
Dates: 2015 – 2017

BARRINGTON ROAD IL ROUTE 62 (ALGONQUIN ROAD) TO CENTRAL ROAD IMPROVEMENTS

AR was selected as the prime consultant on this Phase II project for Barrington Road IL Route 62 (Algonquin Road) to Central Road. As the lead, AR provided engineering services for this transformative project, ensuring that the design and execution of improvements advanced the infrastructure and served the community's needs.

Highlights:

- Improvements modernize and replace traffic signals throughout the corridor and replace the box culvert structure carrying Barrington Road over Poplar Creek.
- AR incorporated a pile-supported embankment that strengthen soil stability, realigned the roadway to improve safety, and incorporated walls at strategic locations.

Construction Cost: \$15.3 Million (est.)
Dates: 2021 – Present





TRANSPORTATION (CONT.)

TOLLWAY I-294 CENTRAL TRI-STATE ST. CHARLES ROAD TO NORTH AVENUE

AR played a vital role in delivering a project that improved mobility and enhanced the quality of life in the region. AR served as a subconsultant by providing Phase II engineering services to add traffic lanes and reduce noise along I-294.

Highlights:

- The net 1.06-mile project area includes retaining walls, noise walls, and bridge reconstruction, along with five lanes of traffic going northbound and six lanes of traffic going southbound. Additionally, the project creates an exit ramp from I-290 westbound to North Avenue/Lake Street.
- AR was responsible for 3D modeling, roadway profiles and alignment, typical sections and super elevation diagrams, maintenance of traffic, pavement markings and signing and preparing final plans, specifications and estimates.

Construction Cost: \$181 Million
Dates: 2020 – 2023

CDOT COMMERCIAL AVENUE CORRIDOR IMPROVEMENTS

AR served as a subconsultant providing Phase II engineering services along Commercial Avenue between 83rd Street and 93rd Street, and along 92nd Street between Anthony Avenue and South Harbor Avenue. This project is one of twelve corridors included in the City of Chicago’s INVEST South/West initiative, which makes improvements to foster economic growth, improve mobility, and beautify community spaces.

Highlights:

- The improvements encompassed pavement rehabilitation, sidewalk reconstruction, updated traffic signals, new street lighting, bus pads, landscaping, drainage improvements, and safer intersections with bus bulbs. In addition, a retrofitted bike path along Commercial Avenue enhances cyclist safety and travel.

Construction Cost: \$30 Million (est.)
Dates: 2021 – Present





2024 ARDMORE RODERICK INTERNS

Empowering Tomorrow’s Workforce: Ardmore Roderick’s Impact on Skills Development for Success

Through strategic partnerships with community initiatives and training programs, we actively invest in nurturing the next generation of professionals. Our commitment ensures that our workforce stays adaptable, competitive, and primed for success, thus fostering innovation and inclusive growth within our organization. Highlighted as a prime example of internal workforce development, our recent success story showcases three ambitious civil engineers who seamlessly transitioned from roles in design and engineering within the utilities market to flourishing careers in pipeline construction.



Ardmore Roderick’s internship program offers students the chance to gain hands-on experience, broaden their professional network, and travel to real project sites to see their ideas come to life. With a focus on professional development through mentoring and feedback, interns have the opportunity to build a portfolio of work samples and launch their careers in a collaborative environment with competitive pay.



YearUp is dedicated to providing equal access to economic opportunity, education, and justice to young adults regardless of their background, income, or location. AR’s President & CEO, Rashod Johnson has been a previous member of the board, our employees have actively engaged as mentors and AR has given opportunities to several students, many of whom have advanced in their careers and continue to contribute to the success of Ardmore Roderick.



The PLCCA Opportunities Works Program places young adults in subsidized internships, exposes them to viable careers, expands their skill sets, and connects them to the training and resources they need to achieve long-term employment in growing industries. AR has recruited interns from the program who have transitioned into full-time employees.

“I wanted to intern with Ardmore Roderick to gain experience in transportation infrastructure. I’m looking forward to learning more about the stormwater systems of the tollway and hearing from others to learn more about careers in infrastructure!”

BENNETT SMITH

University of Illinois, AR Intern Class of 2024





As part of our mission to improve communities, AR is changing lives by not only improving public infrastructure, but by directly assisting the residents of the communities. AR staff is very generous with their time and regularly volunteers for community improvement programs such as Habitat for Humanity, parks improvements, tutoring, judging science and engineering fairs, classroom demonstrations, 3D printing seminars, assisting at local food banks and more. If not us, then who?



INSPIRING FUTURE ENGINEERS THROUGH COMMUNITY ENGAGEMENT

At Ardmore Roderick, we believe that fostering a love of STEM in students begins at an early age. Our employees are actively involved in community outreach, providing classroom mentoring to introduce young students to the principles of STEM through hands-on activities. By engaging with elementary school students in underserved areas, we aim to inspire the next generation of engineers and encourage them to pursue further education and careers in STEM fields.





Ardmore Roderick

INFRASTRUCTURE LEADERS. PROJECT PARTNERS.

TALK TO US.

Michael Burns, PE

Associate Vice President, Construction Management

mburns@ardmoreroderick.com

